



<b>Engine</b>	Cummins B6.7
<b>Rated Power</b>	168 kW (225 hp / 228 ps) @ 2,000 rpm
<b>Operating Weight</b>	19,830 kg (43,718 lbs)
<b>Standard Bucket Size</b>	3.5 m <sup>3</sup> (4.6 yd <sup>3</sup> )
<b>Standard Breakout Force</b>	176 kN (39,566 lbf)
<b>Standard Dump Clearance</b>	2,871 mm (9'5")

# 856T WHEEL LOADER

TOUGH WORLD. TOUGH EQUIPMENT.



# 856T SPECIFICATIONS >>>

## ENGINE

Emission Regulation	Stage V
Manufacturer	Cummins
Model	B6.7
Rated Power	168 kW (225 hp / 228 ps) @ 2,000 rpm
Peak Torque	1,186 N·m (875 lbf·ft) @ 1,300 rpm
Displacement	6.7 L (1.8 gal)
Number of Cylinders	6
Aspiration	Turbocharged & air-to-air intercooled

## TRANSMISSION

Transmission Type	Countershaft, powershift
Torque Converter	Single stage, three elements
Max. Travel Speed, fwd	38.6 km/h (24 mph)
	41.9 km/h (Lock up) (26 mph) (Lock up)
Max. Travel Speed, rev	27.6 km/h (17.1 mph)
Number of Speed, fwd	5
Number of Speed, Rev	3

## AXLES

Differential Front Type	Limited slip differential
Differential Rear Type	Limited slip differential
Axle Oscillation	±12°

## STEERING

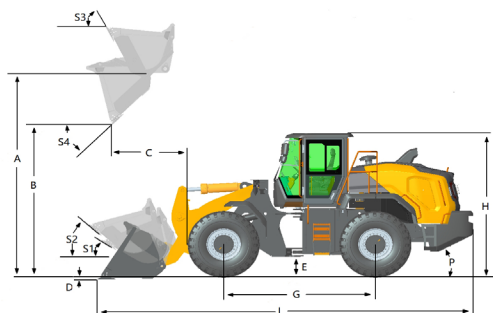
Steering Hydraulic System	Flow amplifying
Steering Relief Pressure	20.7 MPa (3,002 psi)

## BRAKES

Service Brake Type	Wet discs brake
Service Brake Actuation	Full hydraulic
Parking Brake Type	Caliper discs brake
Parking Brake Actuation	Electro-hydraulic release

## HYDRAULIC SYSTEM

Main Pump Type	Piston
Main Relief Pressure	30 ± 0.3 MPa (4,351 ± 44 psi)
Raise	5.1 s
Dump Time	3.0 s
Float Down Time	1.5 s
Hydraulic Cycle Time	9.6 s



## LOADER ARM PERFORMANCE WITH STANDARD BUCKET 3.5m³ (4.6 yd³)

Tipping Load - Straight (ISO 14397-1:2007)	14,898 kg (32,844 lbs)
Tipping Load - Full Turn (ISO 14397-1:2007)	13,163 kg (29,019 lbs)
Bucket Breakout Force	176 kN (39,566 lbf)
A Maximum Hinge Pin Height	4,210 mm (13'10")
B Dump Clearance at Full Height Discharge	2,871 mm (9'5")
C Dump Reach at Full Height Discharge	1,355 mm (4'5")
D Maximum Digging Depth, Bucket Level	82 mm (3")
S <sub>1</sub> Rollback at Ground Level	42.7°
S <sub>2</sub> Bucket Rollback at Carry	48°
S <sub>3</sub> Bucket Rollback at Maximum Height	63°
S <sub>4</sub> Maximum Dump Angle at Full Height	45°

## BUCKET PERFORMANCE

Reference Bucket	2.7~5.6 m³ (3.5~7.3 yd³)
------------------	--------------------------

## DIMENSIONS

E Ground Clearance	421 mm (1'5")
G Wheelbase	3,370 mm (11'1")
H Cab Height	3,410 mm (11'2")
J Wheel Tread	2,150 mm (8'3")
K Width over Tires	2,750 mm (9'0")
L Length with Bucket Down	8,407 mm (27'7")
M Turn Angle, Either Side	38 °
P Rear Angle of Departure	28 °
R <sub>1</sub> Turning Radius, Bucket Carry	7,018 mm (23')
R <sub>2</sub> Turning Radius, Outside of Tire	6,304 mm (20'8")
W Width over Bucket	2,920 mm (9'7")

## TIRES

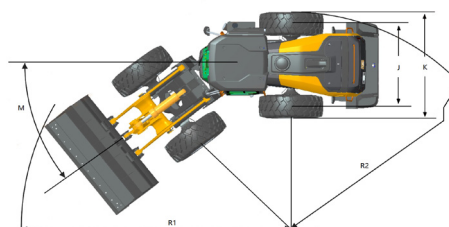
Tire Size	23.5R25 ★ L-3
-----------	---------------

## OPERATING WEIGHTS

Operating Weight	19,830 kg (43,718 lbs)
------------------	------------------------

## SERVICE CAPACITY

Fuel Tank	330 L (87.2 gal)
Engine Oil	19 L (5 gal)
Aftertreatment DEF	30 L (7.9 gal)
Cooling System	35 L (9.2 gal)
Hydraulic System	205 L (54 gal)
Transmission and Torque Converter	35 L (9.2 gal)
Axles, each	50 L



Guangxi Liugong Machinery Co., Ltd.

No. 1 Liutai Road, Liuzhou, Guangxi 545007, PR China  
T: +86 772 3886124 E: overseas@liugong.com  
www.liugong.com

Specifications and designs are subject to change without notice. Machines shown may include optional equipment. Liugong standard and optional equipment may vary from region to region. Please consult your Liugong dealer for information specific to your area. Engine power kW is converted to horsepower (1 kW=1.3596 ps and 1 kW=1.3410 hp) in this file.

04/2025 Designed by LiuGong  
Replace the previous versions of 03/2025